






# 1448

car models covered

# 777

heavy-duty models covered

## Delphi is pleased to announce the release of the DS Software version 2024.12

<b>Coverage improvement</b> 	<b>1070</b> new car unique system selections <b>382</b> new heavy-duty unique system selections <b>24</b> new EV models in CARS software <b>8</b> new EV models in Heavy-duty software
<b>Feature enhancements</b> 	New vehicle selection dialog box Simplified System/Function selection Filter toggle for not responding systems UK private registration plates supported in new UI VTI opens in DS-HUB Battery warning message on Connect dialog
<b>New Functionality</b> 	Renault & Dacia Security Gateway Ford Security Gateway

Scan here to update your software



## Coverage enhancements



### New Models and Model Years

Make	New Model	Type	Years
BMW	5-series [G60/G61]	CAR	2024
BMW	i5 [G60]	CAR	2023 - 2024
BMW	iX2 [U10]	CAR	2024
BYD	Seal [23-]	CAR	2023 - 2024
Ford	Tourneo Connect [02-09]	CAR	2002 - 2009
Ford	Tourneo Connect [10-14]	CAR	2010 - 2014
Ford	Tourneo Courier [24-]	CAR	2024
Honda	Civic [22-]	CAR	2022
Honda	Civic Type R[23-]	CAR	2023
Honda	ZR-V [23-]	CAR	2023
Hyundai	Bayon [21-]	CAR	2021 - 2024
Hyundai	i20 [21-]	CAR	2021 - 2024
Hyundai	Tucson [21-]	CAR	2021 - 2024
Jeep	Gladiator [19-]	CAR	2019 - 2022
KIA	EV9 [24-]	CAR	2024
KIA	Niro [23-]	CAR	2023 - 2024
LYNK & CO	1	CAR	2017 - 2023
Mercedes	190 [W201]	CAR	1984 - 1993
Mercedes	AMG GT [C192]	CAR	2024
Mercedes	CLE [C236]	CAR	2024
Mercedes	E-Class [W214]	CAR	2024
Mercedes	Mercedes-AMG ONE [C298]	CAR	2023 - 2024

Make	New Model	Type	Years
Mini	Countryman [U25]	CAR	2024
Nissan	Ariya FE0 [22-]	CAR	2022 - 2024
Renault	Megane E-Tech	CAR	2023
Škoda	Kodiatq II [24-]	CAR	2024
Suzuki	Swift [24-]	CAR	2024
Tesla	Model 3 [2017-]	CAR	2017 - 2024
Tesla	Model Y [2020-]	CAR	2020 - 2024
Toyota	C-HR [24-]	CAR	2024
Volkswagen	ID.7	CAR	2024
Volkswagen	Passat IX [24-]	CAR	2024
Volkswagen	Tiguan [24-]	CAR	2024
Fiat	Scudo [22-]	LCV	2022 - 2023
Mercedes	EQT [420]	LCV	2024
Mercedes	G-Class [W464]	LCV	2023
Nissan	Primastar X82 [22-]	LCV	2022 - 2024
Renault	Express II	LCV	2021 - 2023
Volkswagen	ID. Buzz	LCV	2023 - 2024
Volkswagen	ID. Buzz Cargo	LCV	2023 - 2024
Volkswagen	T7 Multivan [22-]	LCV	2022 - 2025
Iveco Bus	Minibus	HD	2014 - 2023
Iveco Trucks	X-Way	HD	2019 - 2024
MAN	TG3 Euro 5	HD	-

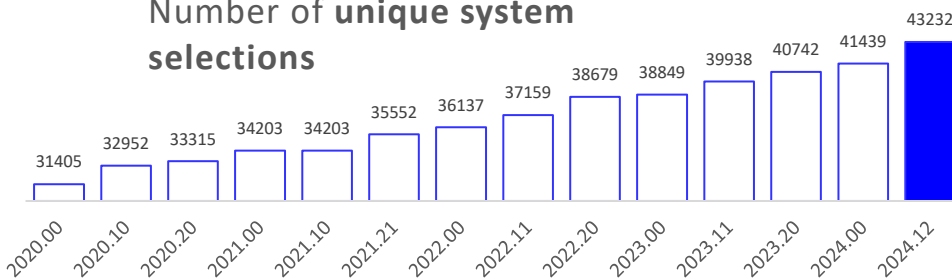
## Passenger car and Light Commercial Vehicle Coverage enhancements



### DS software – car content

System type		Brands	Models
Number of brands / models per system type	Petrol	61	1510
	Fuel	15	165
	Ignition	5	15
	Diesel	59	1137
	Brake	58	1327
	Instrument	52	1008
	Climate	52	985
	Gearbox	52	936
	Immobiliser	47	691
	SRS (Safety restraint system)	57	1297
	TCS (Traction control system)	1	1
	Multifunction	54	1172
	SLR (Service Light Reset)	50	863
	Scan	53	1209
	EV	39	332
	Suspension	7	36
	TPMS (tire pressure monitoring)	44	610
	ADAS	49	799
<b>Total brands / models</b>		<b>69</b>	<b>1448</b>
<b>Total unique system selections</b>		<b>43232</b>	

Number of unique system selections



**332** Electric Vehicle models covered  
+24 since 2024.00

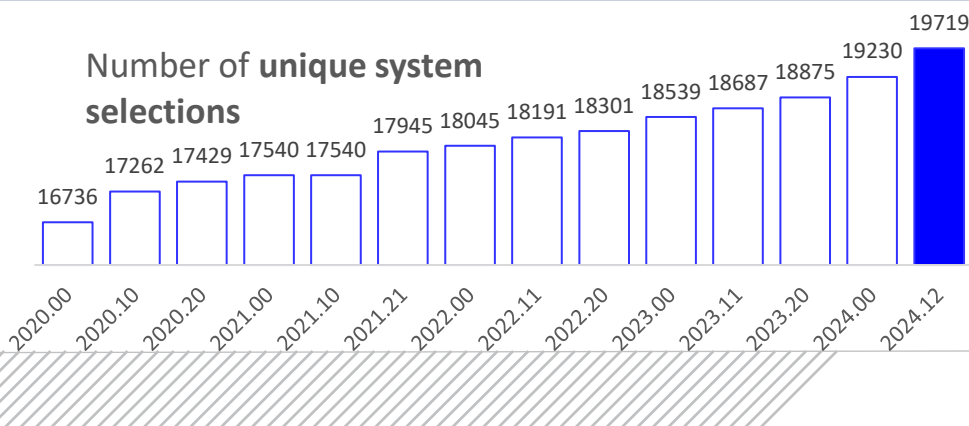


## Heavy Duty vehicles Coverage enhancements



### DS software – heavy-duty content

	System type	Brands	Models
Number of brands / models per system type	Petrol	48	250
	Fuel	5	17
	Diesel	0	0
	Brake	75	735
	Instrument	73	722
	Climate	52	506
	Gearbox	41	367
	Immobiliser	60	533
	SRS (Safety restraint system)	40	218
	Multifunction	61	574
	SLR (Service Light Reset)	42	293
	Scan	41	396
	EV	21	49
	Suspension	40	394
	TPMS (tire pressure monitoring)	27	98
ADAS	34	230	
<b>Total brands / models</b>		<b>81</b>	<b>777</b>
<b>Total unique system selections</b>		<b>19719</b>	



**49** Electric Vehicle models covered  
+8 since 2024.00

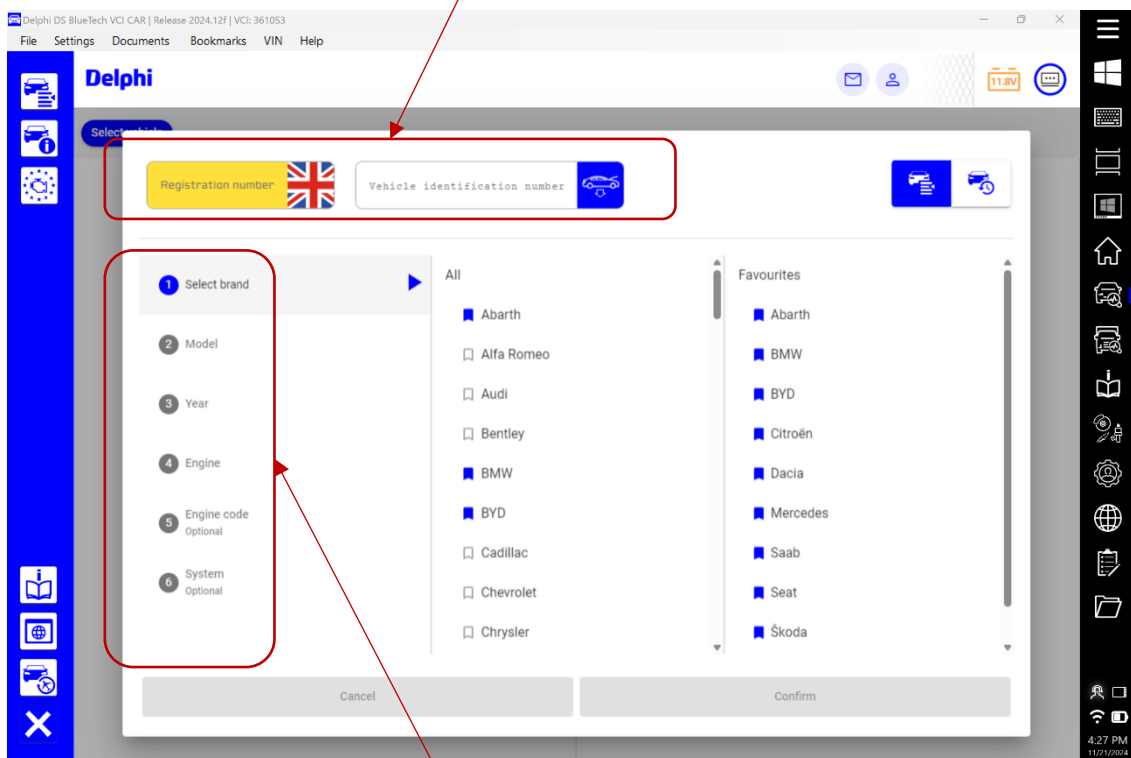
## Features enhancement



### New Vehicle Selection dialog box

The selection dialog box has been improved to bring more clarity on the different vehicle identification methods and make the VRM\* and VIN fields more prominent. The interface has also moved from a horizontal stepper to a vertical one.

Vehicle identification fields

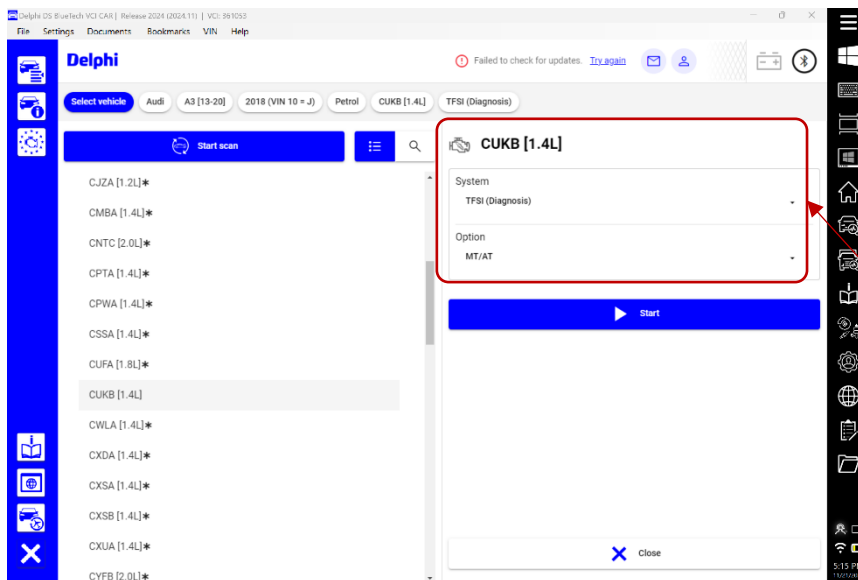


Vertical stepper

\*: VRM functionality available for UK, France and Italy

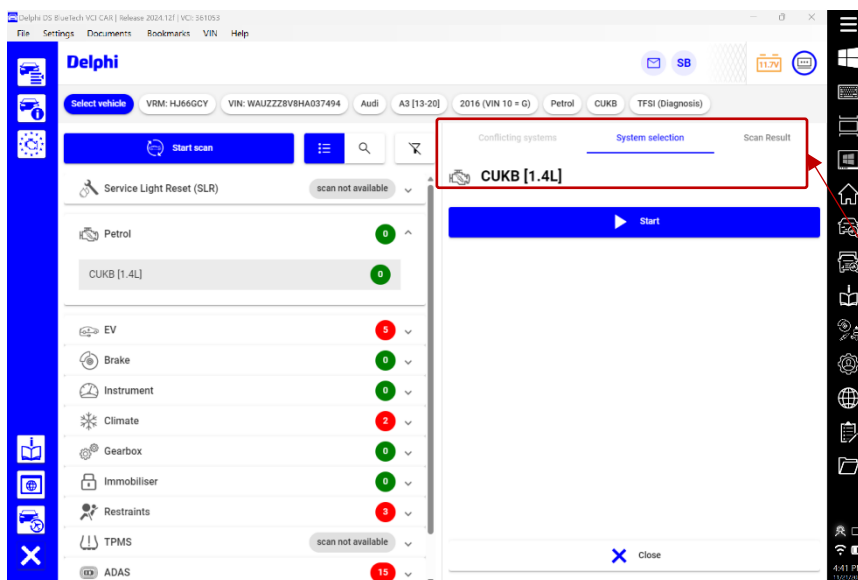
### Simplification of the System / Function selection

From 2024.12, the System or Function selection shows only the relevant information.



**System/Function selection in releases BEFORE 2024.12**

All possible options can be displayed using the drop-down lists, even when only one is relevant



**System/Function selection in releases FROM 2024.12**

When only one option is relevant, the drop-down lists are removed.

It is always possible to restore the lists by switching to the “Expert Mode”.

### Filter toggle for not responding systems

The user now has the possibility to filter the status of the systems scanned. Those that didn't respond can be hidden, so the user can focus only on the relevant information. See below the example of "Multifunction" system.

#### Filter OFF

Not responding systems are displayed

Scan completed  
System responded: 25  
Fault codes found: 34

**Climate control - Diagnose**  
U046C00 Invalid Data Received From Electric A/C Compressor  
B10CE00 Blower reduction by energy management

**Central electronics - Diagnose**  
B147A18 Remote control key 2

**Parking assistance - Diagnose**  
U112300 Databus error value received  
U112300 Databus error value received  
U112300 Databus error value received

**Distance controller - Diagnose**  
U112300 Databus error value received  
U112200 CAN bus; implausible message  
U112300 Databus error value received  
U112300 Databus error value received  
U112200 CAN bus; implausible message  
U112300 CAN bus; implausible message  
U112300 Databus error value received  
U112200 CAN bus; implausible message  
U112200 CAN bus; implausible message  
U112300 Databus error value received

#### Filter ON

Only responding systems are shown

Scan completed  
System responded: 25  
Fault codes found: 34

**Climate control - Diagnose**  
U046C00 Invalid Data Received From Electric A/C Compressor  
B10CE00 Blower reduction by energy management

**Central electronics - Diagnose**  
B147A18 Remote control key 2

**Parking assistance - Diagnose**  
U112300 Databus error value received  
U112300 Databus error value received  
U112300 Databus error value received

**Distance controller - Diagnose**  
U112300 Databus error value received  
U112200 CAN bus; implausible message  
U112300 Databus error value received  
U112300 Databus error value received  
U112200 CAN bus; implausible message  
U112300 CAN bus; implausible message  
U112300 Databus error value received  
U112200 CAN bus; implausible message  
U112200 CAN bus; implausible message  
U112300 Databus error value received



### VRM search improvements

#### United Kingdom registration plate:

The DS version 2024.12 now supports the private registration plate numbers in the new interface.

In case the software doesn't recognize the private number automatically, it is possible to force the search by clicking "Enter" button.

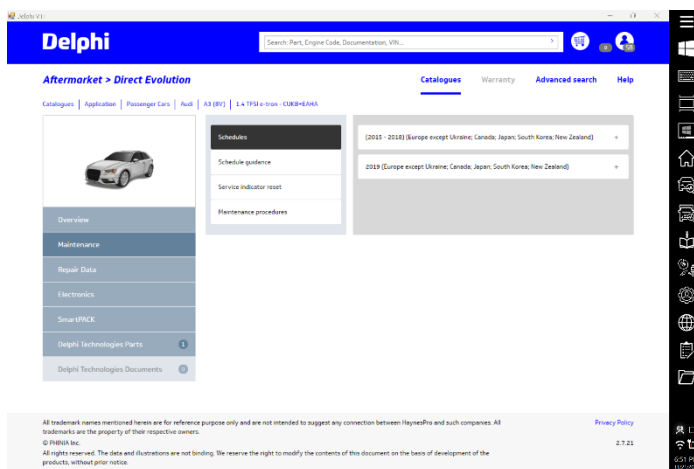
#### France registration plate:

The registration field now accepts both formats: with and without dashes.

The following types are recognized: "1234AB12" "AB123CD" "AB-123-CD"

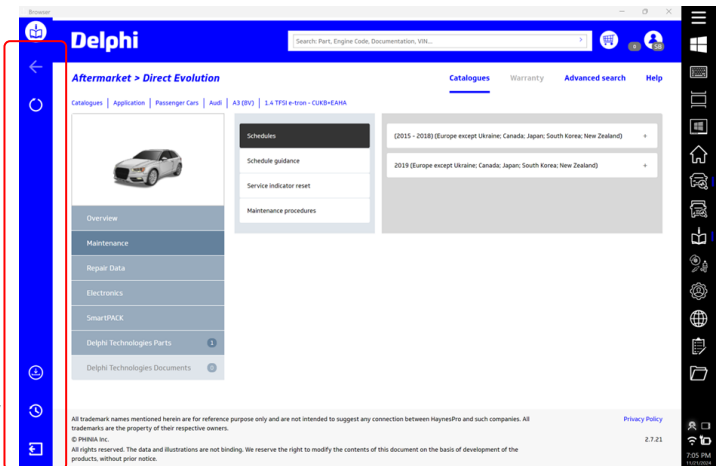
### VTI & DS-HUB

From 2024.12, VTI (Vehicle Technical Information platform) opens directly in the DS-HUB.



Before DS v2024.12, the VTI page is open in a separate browser.

From DS v2024.12



Back  
Refresh the page

A set of functions are available to allow a better navigation experience when in VTI

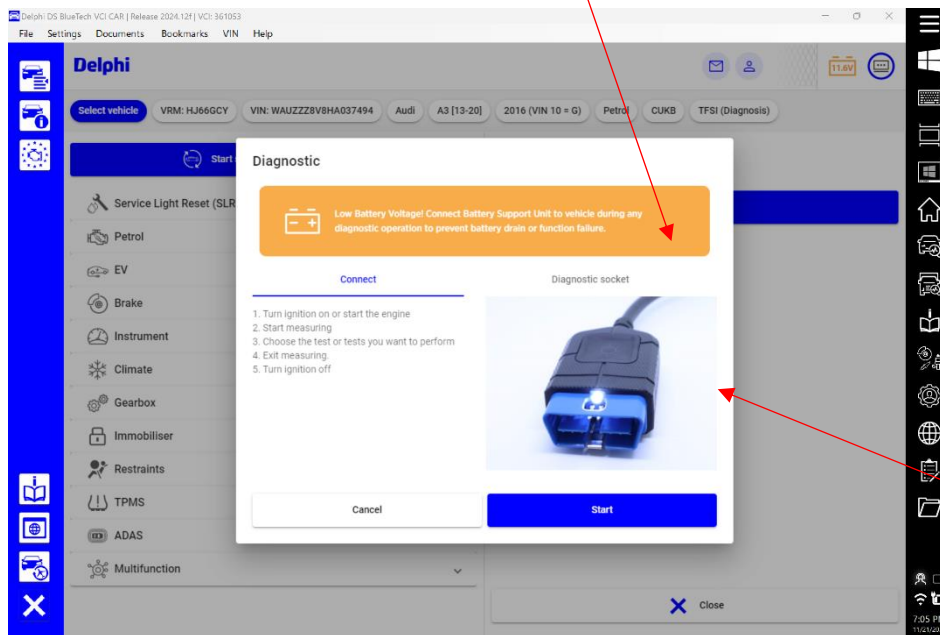
Download  
History  
Exit

### Battery warning message

A battery voltage within the tolerances is a critical prerequisite for performing Diagnostics operations.

To prevent issues that may be linked to a battery voltage drop during the diagnostics operations, a warning message has been added in the “Connect” dialog box, as shown below:

Warning message raised when the voltage is too low involving a risk of a flat battery during the Diagnostics operations.  
The technician is warned at the connection stage.



« Connect »  
dialog box

## New functionalities

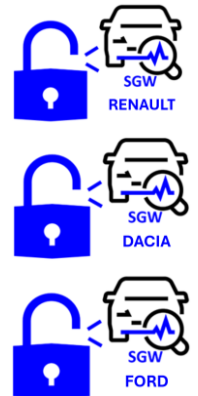


### Renault / Dacia / Ford Security Gateway

#### 1- Description:

The DS tool now offers the users having a **valid BlueTech license**, the possibility to access the protected functions and fully diagnose the Ford, Renault and Dacia vehicles fitted with the Security Gateway. This includes, but is not limited to, components activation, test components, perform adjustments, coding and calibrations...

This is a fully integrated functionality, to be activated in the DS software Security Gateway portal.



#### 2- Brand activation process:

Refer to the section 1.8 of the Technical Bulletin **DT700**, available in Direct Evolution.

#### 3- Examples of vehicles\*

##### DACIA:

2020 to 2024 Models: Duster, Jogger, Logan III, Sandero III



##### RENAULT:

2019 to 2024 Models: Arkana, Captur II, Clio V, Kangoo III, Megane E-Tech, Megane IV Ph2, Trafic III Ph2, Zoe



##### FORD:

2018 to 2024 Models: Bronco [2021-], EcoSport, Edge, F-150 [2021-], Fiesta [2017-], Focus [2018-], Kuga [2020-], Transit [2019-]



\*: list not exhaustive

## Security Gateway: brands coverage:

Below is the DS software capability for Security Gateway, as of the version 2024.12.  
Access to Security Gateway protected vehicles requires a valid DS software license.

Brand	Integrated solution	Requires additional component	Included in the DS license price	Add-on license
Alfa Romeo	✓	No	✓	No
Audi	✓	No	✓	No
Cupra	✓	No	✓	No
Dacia	✓	No	✓	No
Fiat	✓	No	✓	No
Ford	✓	No	✓	No
Iveco	✓	No	✗	Yes Order <b>SV60318</b> or <b>SV60319</b>
Iveco Trucks	✓	No	✗	Yes Order <b>SV60318</b> or <b>SV60319</b>
Jeep	✓	No	✓	No
Mercedes	✓	No	✓	No
Polestar	✓	No	✓	No
Renault	✓	No	✓	No
Seat	✓	No	✓	No
Škoda	✓	No	✓	No
Smart	✓	No	✓	No
Volkswagen	✓	No	✓	No
Volvo	✓	No	✓	No

For IVECO Add-on license, SV60318 (account setup and license) is necessary the first year only. The following years, please order SV60319 (license renewal) before End November each year.

*For more details, please refer to the MI Note DM1488 (April 2024) or contact your Delphi representative.*

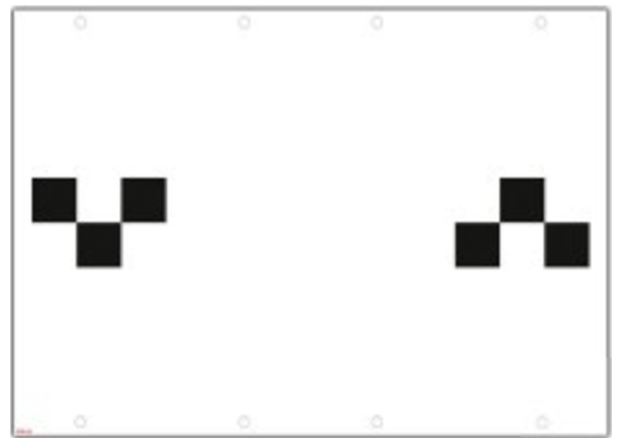
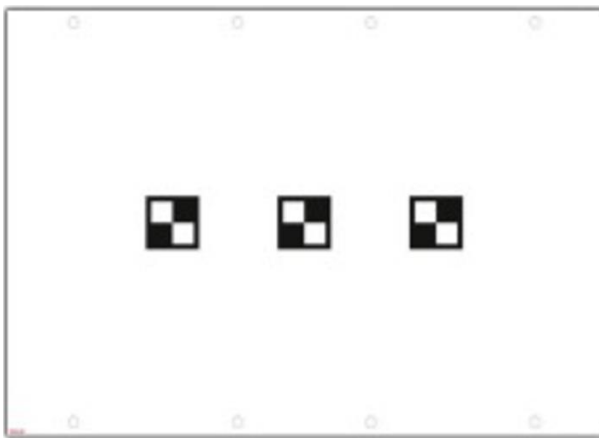
### ADAS – Front camera targets update

The front camera static calibration capability is expanded to cover Subaru, Toyota and Nissan.

The calibration target board is available under the part number SV60323.

Like for the other panels in the Delphi ADAS range, SV60323 includes 2 targets (one on each side):

- TFC-22: Toyota & Subaru
- TFC-13: Nissan



The panel applies to the following models:

Brand	Model	Year	Board
Subaru	Soltera	2022-2023	TFC-22
Toyota	BZ4X	2022-2024	TFC-22
Toyota	Corolla Cross	2022-2024	TFC-22
Nissan	Qashqai J11 SJNDJ18E***000001 SJN**J11*1000001 SJNF**J11*Z000001 Z8NF**J11**000001	2014-2017	TFC-13

2024.12 covers **49** CAR/LCV brands and **799** models for ADAS static and dynamic calibrations

### DS-HUB

Delphi has released a new feature called DS-HUB, to better support your daily Diagnostic job. DS-HUB is a central point where you can directly access most of the Delphi resources relevant to Diagnostics. It has been made available since May 2024, initially for 12" Surface tablet users and has been extended to 10" Lenovo TT10 devices recently.

In the DS-HUB, you will see the status of your licenses, the news published by Delphi, the Masters Of Motion content, the Delphi catalog and much more.

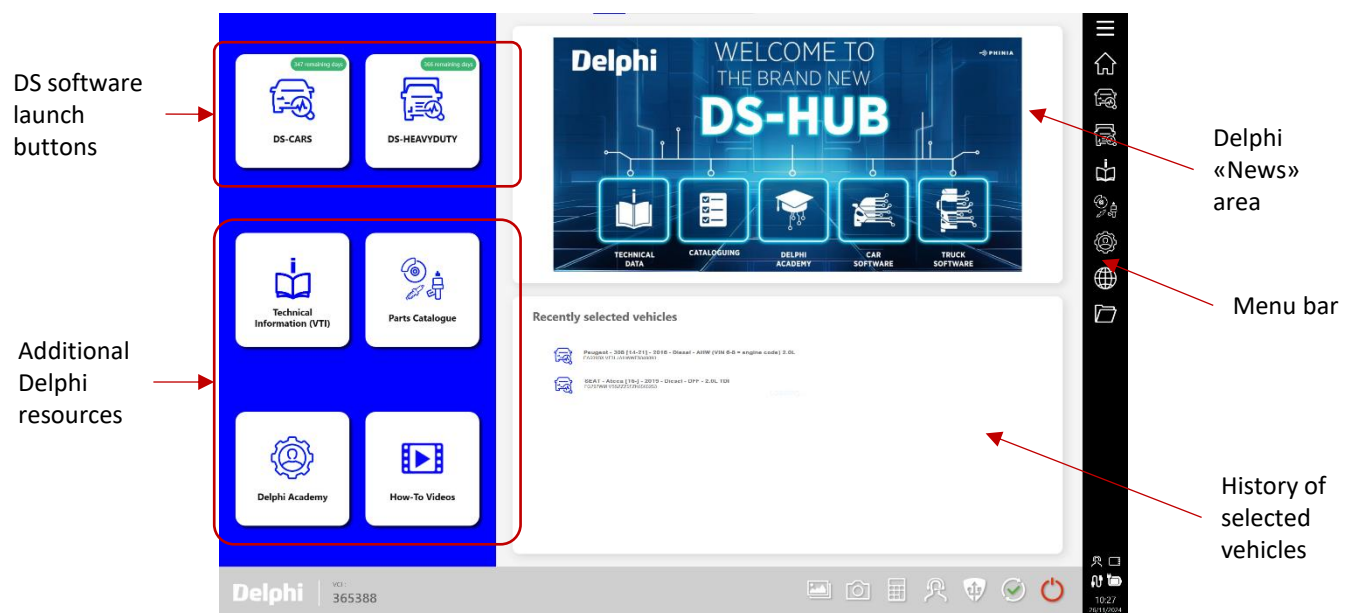
#### **ACTION REQUIRED:**

ONLY if you have the latest DSPAD12 tablet (MS Surface 12") or DSPAD10 tablet (Lenovo TT10), you can download the DS-HUB from DSO download page <https://dso.my-delphi.com/UK/downloads.html> and install it for free on your machine.

Restart the machine after the install.

If you already have DS-HUB preinstalled on your Delphi tablet, simply make sure you have the latest version, which is **1.0.6.6**

Other machine types will be supported soon.



**IMPORTANT:** To benefit from the full potential of the DS-HUB, the users of DS version 2024.12 must upgrade the DS-HUB to version 1.0.6.6.

Visit <https://www.delphiautoparts.com/en-gb/diagnostics-test-equipment/ds-hub> to know more about DS-HUB.